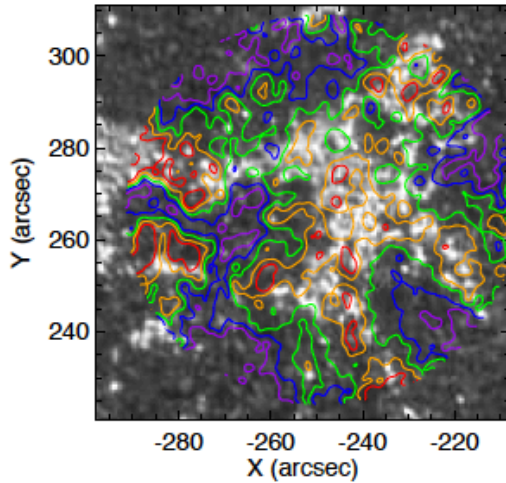


2016.1.00050.S
Plage, Band3/6, SP

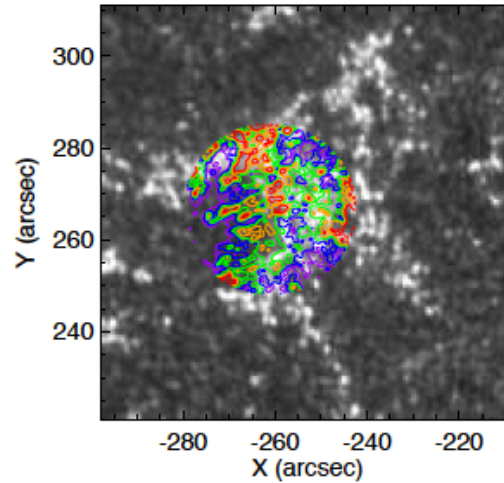
Kazu Iwai

Co-alignment

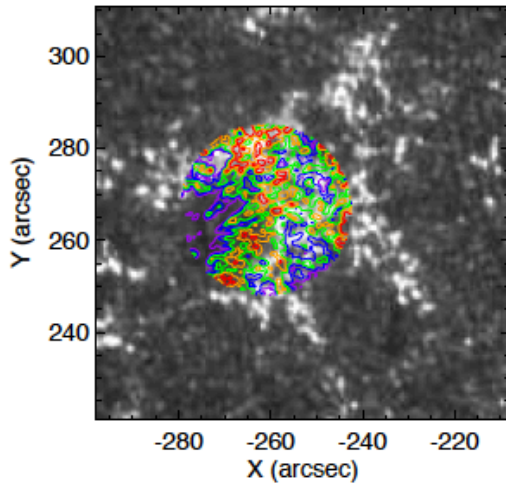
Band 3 vs AIA1700 at 17:20



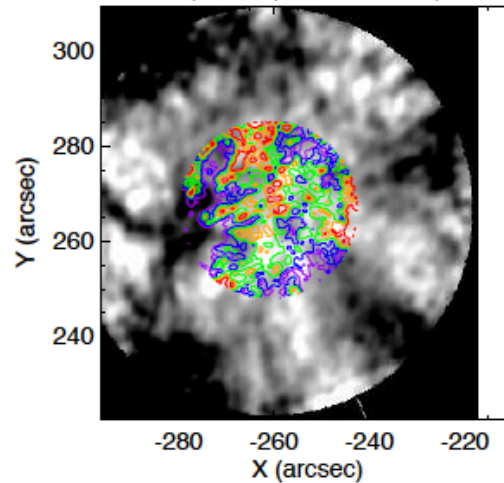
Band 6 vs AIA1700 at 16:37



Band 6 vs AIA1700 at 16:00



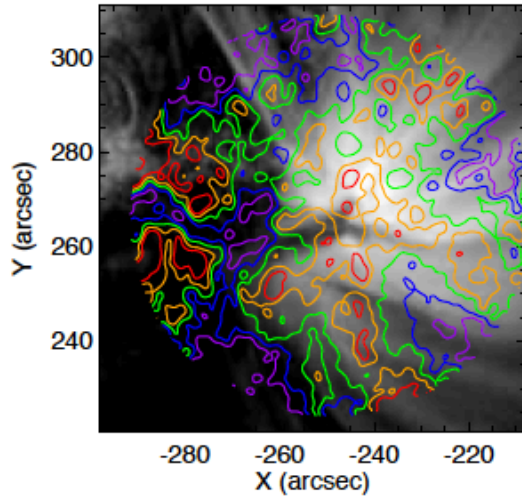
Band 6(16:37) vs Band 3(17:20)



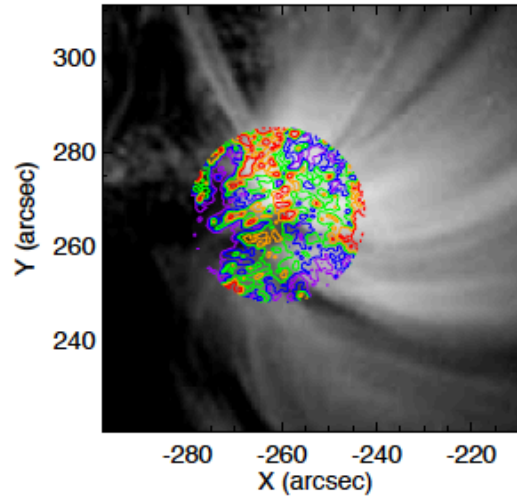
Band 3 is similar to 1700
However, Band 6 is not

Coronal emissions

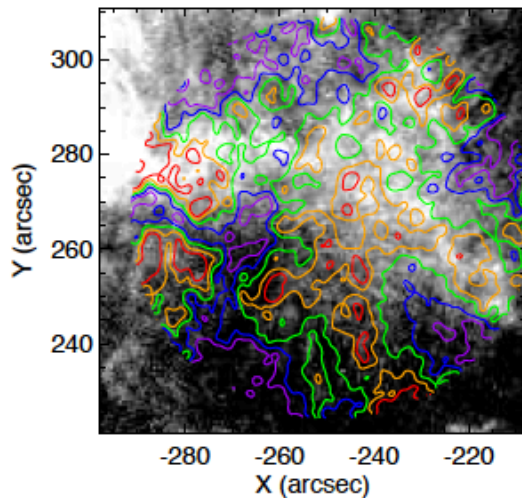
Band 3 vs AIA171 at 17:20



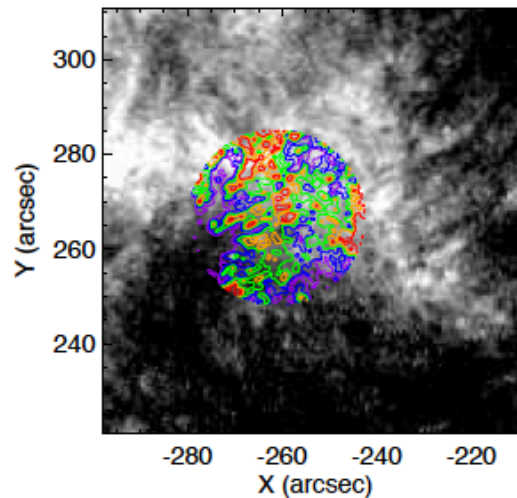
Band 6 vs AIA171 at 16:37



Band 3 vs AIA304 at 17:20



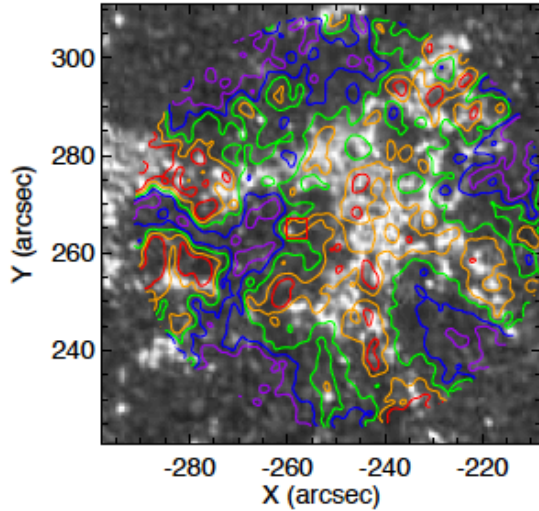
Band 6 vs AIA304 at 16:37



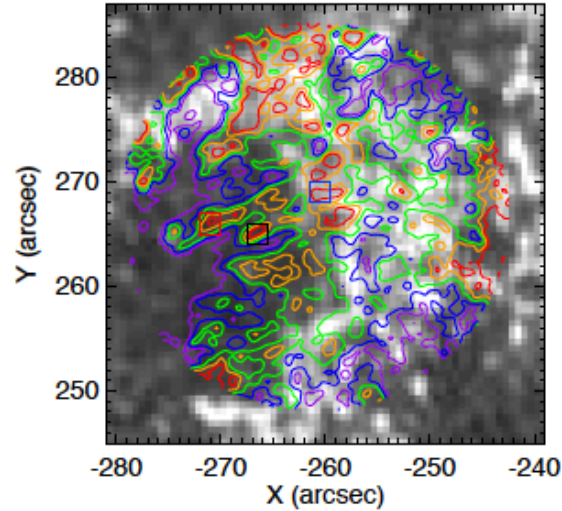
Some bright regions
are correspond to
171
Coronal emission at
230GHz?

Time variation

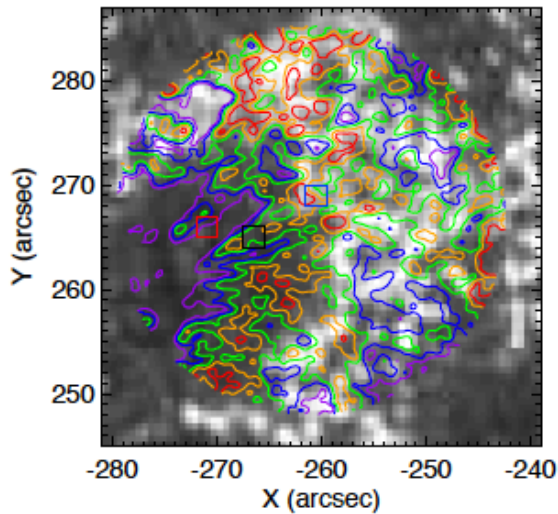
Band 3 vs AIA1700 at 17:20



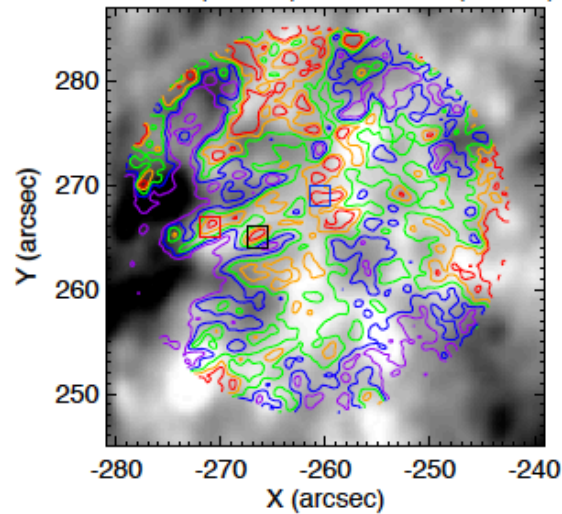
Band 6 vs AIA1700 at 16:37



Band 6 vs AIA1700 at 16:00



Band 6(16:37) vs Band 3(17:20)



light curves of radio and EUV

